

Sri Krsna Caitanya Prabhu Nityananda
Sri Advaita Gadadara Srivasadi
Gaura Bhakta Vrinda

Hare Krsna Hare Krsna
Krsna Krsna Hare Hare
Hare Rama Hare Rama
Rama Rama Hare Hare



Week 341

May 01
2015

Gokul Bhajan & Vedic Studies
North Carolina, USA

A group of pilgrims, including men in traditional Indian attire like kurta-pajamas and shawls, are walking along a dirt path. In the background, there is a white, multi-story building with a flag on top, situated in a hilly, semi-arid landscape with sparse trees. The scene is captured from a slightly elevated position, possibly from a vehicle, as a dark metal railing is visible in the foreground.

Pilgrimage Memories (4)

4 Weeks from Feb 23..



- Chennai -> Kurdha Rd
- Kurdha Rd to Puri
- Puri to Calcutta
- Calcutta to Nawadwip
- Nawadwip to Calcutta
- Calcutta to Delhi
- Delhi > Aniruddh Prabhu
- Aniruddh home to Jaipur
- Jaipur to Mathura Vrindavan
- Mathura to Pune, Kurdvadi
- Kurdvadi to Pandarpur
- Pandarpur to Kurdvadi
- Kurdvadi to Manthralaya
- Manthralaya to Sindhanur
- Sindhanur to Kishkintha
- Kishkintha to Sindhanur
- Sindhanur to Bangalore
- Bangalore to Chennai
- Chennai to Kanyakumari





Rajdhani Express Derailed in 2002



Delhi ...
and to the House of
Sri Aniruddha Prabhu



Across the home of Sri Aniruddha Prabhu

















brahmā jagad-gurur devaiḥ
sahāsrīya sureśvaraiḥ
vainyasya dakṣiṇe haste
drṣṭvā cihnaṁ gadābhṛtaḥ
pādayor aravindaṁ ca
taṁ vai mene hareḥ kalām
yasyāpratihatāṁ cakram
aṁśaḥ sa parameṣṭhinaḥ S.B. 4.15.9-10



Lord Brahmā, the master of the entire universe, arrived there accompanied by all the demigods and their chiefs. Seeing the lines of Lord Viṣṇu's palm on King Pṛthu's right hand and impressions of lotus flowers on the soles of his feet, Lord Brahmā could understand that King Pṛthu was a partial representation of the Supreme Personality of Godhead. One whose palm bears the sign of a disc, as well as other such lines, should be considered a partial representation or incarnation of the Supreme Lord









For more Details, please
visit our website:

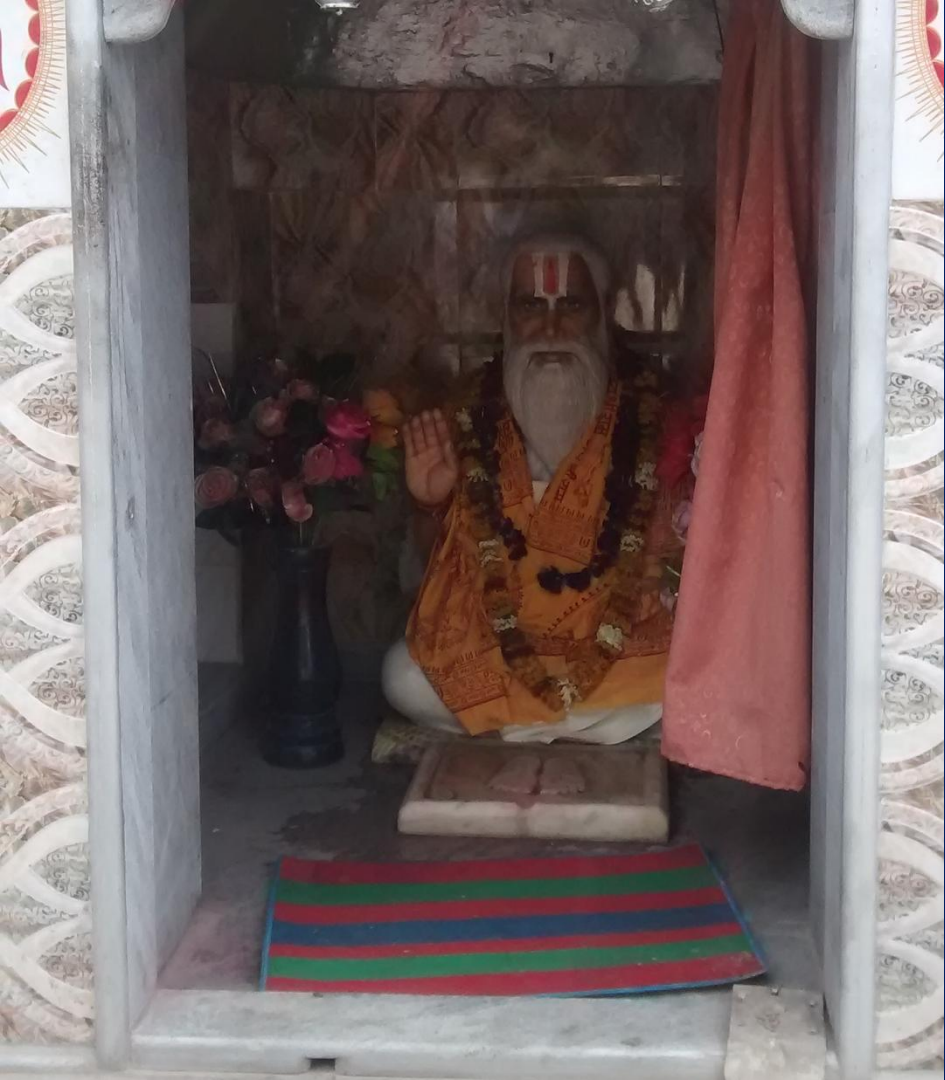
www.gokulbhajan.com

Select 'SADHANA' →

Chanting

Visit to a Siddha
Bhakta's place
on a nearby Hill









Jaipur









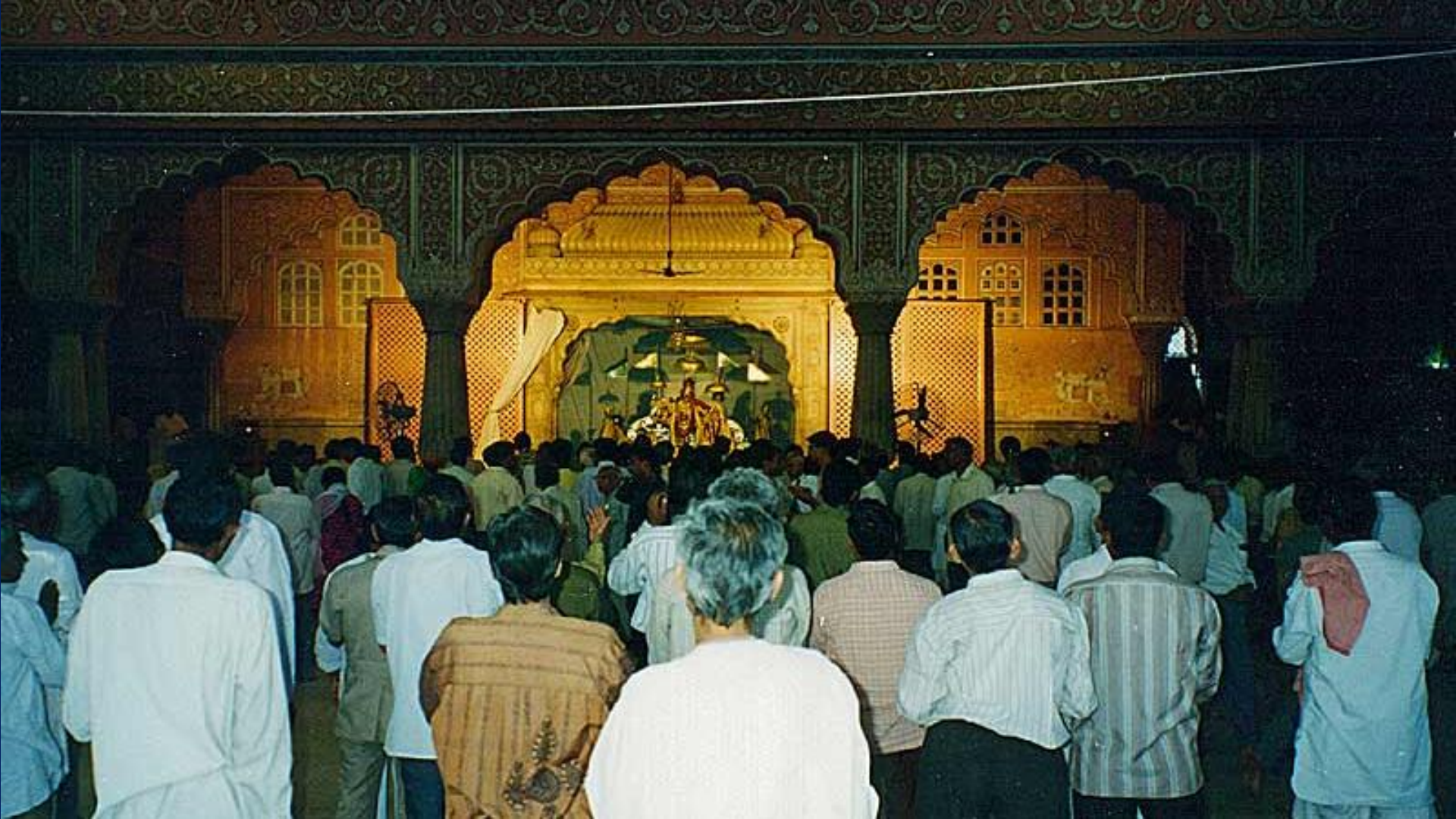




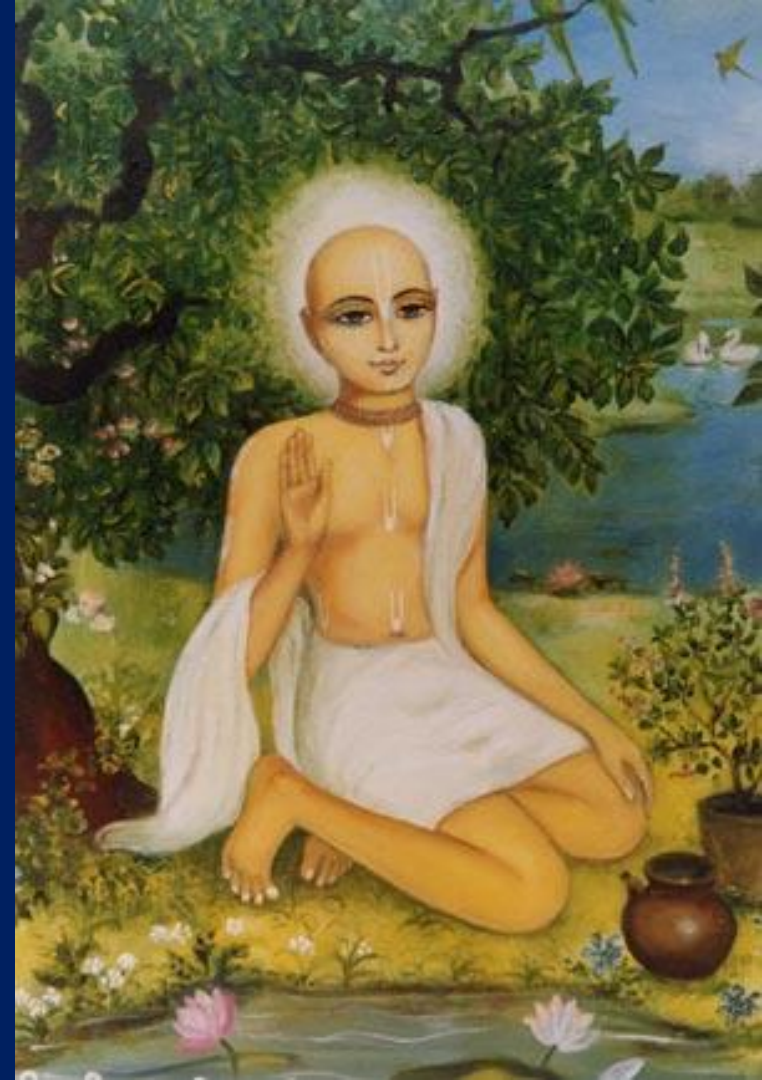














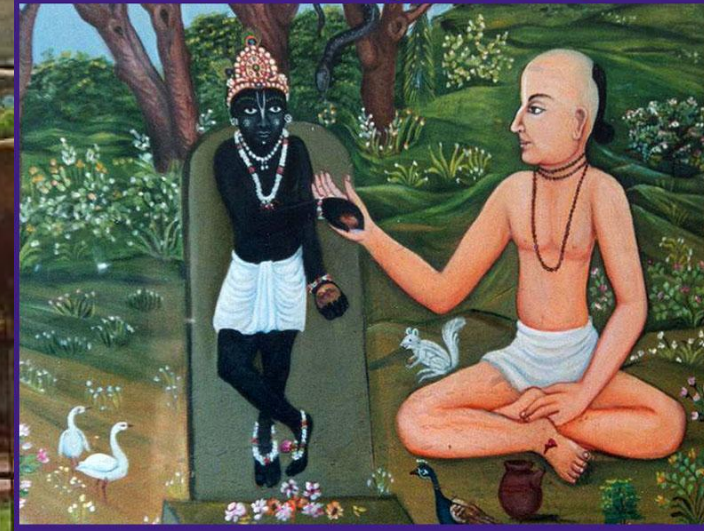


Madanmohan Temple - Karoli

Madan-mohan means “one who can even enchant Cupid.” The Deity of Madan-mohan (formerly Madan-Gopal) was made for Krishna's great grandson Vajranabha and for many years it was lost...



*Karauli - Madan Mohan
and
Sanatana Goswami*





THANK YOU!

Hare Krishna!